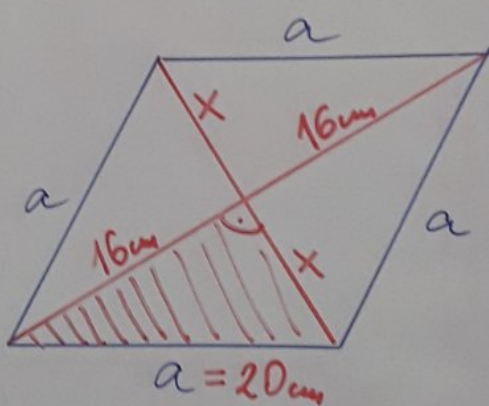


ПРИПРЕМА ЗА ПИСМЕНИ ЗАДАТАК 18.01.21.

РОМБ  
331. а)  $d_1 = 32 \text{ cm}$   
 $O = 80 \text{ cm}$   
 $P = ?$   $h = ?$   
 $a = ?$

$$O = 4 \cdot a$$
$$80 \text{ cm} = 4 \cdot a$$
$$a = 20 \text{ cm}$$



$$20^2 = 16^2 + x^2$$

$$x = 12 \text{ cm}$$

$$d_2 = 2 \cdot 12 \text{ cm} \Rightarrow d_2 = 24 \text{ cm}$$

$$P = \frac{d_1 \cdot d_2}{2}$$

$$P = \frac{32 \cdot 24}{2}$$

$$P = 384 \text{ cm}^2$$

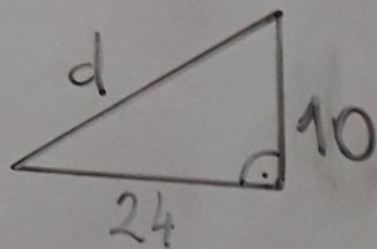
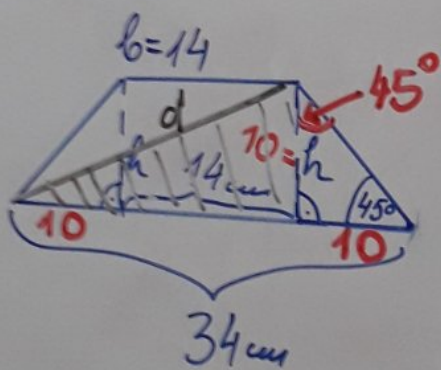
$$P = a \cdot h$$
$$384 = 20 \cdot h$$
$$h = 384 : 20$$

359.  $a = 34 \text{ cm}$   
 $b = 14 \text{ cm}$   
 $\alpha = \beta = 45^\circ$

$$P = \frac{a+b}{2} \cdot h$$

---

$d = ?$   $h = 10 \text{ cm}$



$$d^2 = 24^2 + 10^2$$

$$X^4 \cdot X^3 = X^{4+3}$$

$$X^4 : X^3 = X^{4-3}$$

$$(X^4)^3 = X^{4 \cdot 3}$$

$$48^4 : 16^4 = (48 : 16)^4 = 3^4$$

$$\left(\frac{2}{5}\right)^{10} \cdot \left(\frac{5}{2}\right)^{10} = \left(\frac{\cancel{2}}{5} \cdot \frac{5}{\cancel{2}}\right)^{10} = 1^{10} = 1$$